



Featured Freezer RTD Product

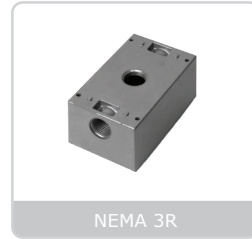
Glycol Bottle (Left), 3PT Glycol Bottle (Right)



Galvanized Raco Box



NEMA 4X



NEMA 3R



Lead Wire

# FREEZER RTDS

## Platinum RTDs

The A/100-LTS, A/1K-LTS, A/TT100-LTS, and A/TT1K-LTS Series sensors and temperature transmitters incorporate a Class B, wire wound platinum RTD sensor which conforms to DIN-IEC-751 and DIN 43760 platinum RTD standards. They are designed to withstand the extreme temperature fluctuations that cause issues with standard temperature sensors in your typical freezer application. The ACI A/TTM Series offers a matched calibration of the sensor and transmitter, which improves the measurement accuracy. An N.I.S.T. certificate is provided with all A/TTM Series devices. Robust, high- end performance in addition to N.I.S.T certification makes this series suitable for applications such as pharmaceutical or scientific laboratories.





**SPECIFICATIONS**

<b>Sensor Accuracy (single point)</b>	+/-0.54°F @ 32°F (0°C)
<b>Sensor Accuracy (formula)</b>	0.3°C + 0.005 X [t] = maximum error C*
<b>Sensor Accuracy Class</b>	Class B Tolerance
<b>Combined Sensor &amp; Transmitter Accuracy</b>	+/-1.5% span
<b>Stability</b>	less than +/-0.1°C drift
<b>Repeatability</b>	+/-0.3°C (+/-0.54°F)
<b>Sensor Operating Temperature Range</b>	-198 to 150°C (-324 to 302°F)
<b>Temperature Coefficient</b>	0.00385 Ohm/Ohm/°C
<b>Standardization</b>	DIN-IEC-751 (formerly DIN 43760)
<b>Product Dimensions (Lead Wire)</b>	(L) 6, 10, 30, 50 & 100'
<b>Product Dimensions (Glycol Kit)</b>	Bottle: (H) 3.39" (DIA) 1.53" Bracket: (L) 1.50" (W) 1.82" (H) 2.60"
<b>Product Dimensions (Glycol-3 PT-Kit)</b>	Bottle: (H) 4.04" (DIA) 2.62" Bracket: (L) 3.00" (W) 2.63" (H) 3.36"
<b>Product Dimensions (NEMA 3R)</b>	(H) 4.58" (W) 2.82" (D) 2.25"
<b>Product Dimensions (NEMA 4X)</b>	(H) 3.70" (W) 2.55" (D) 2.22"
<b>Product Dimensions (Galvanized Raco Box)</b>	(H) 4.20" (W) 2.326" (D) 1.979"

\* [t] = Numerical value of the temperature in °C without taking into account positive or negative signs.

**ORDERING**

Select one Series (A) & specify Span if necessary (parts with TT require spans & outputs). Choose one Output (B), one Housing (C) & one Lead Wire (D). If a Bottle, or an additional accessory is desired, please complete (1) below. **NOTE:** The A/TT100-LTS Series is only available with 6 or 10' leads.

<b>A</b> Sensor Series	<b>B</b> Output	<b>C</b> Housing	<b>D</b> Lead Wire
<input type="radio"/> <b>A/100-LTS</b> (100Ω Platinum RTD)	<input type="radio"/> ---- (Resistive)	<input type="radio"/> ---- (No Housing)	<input type="radio"/> <b>6'</b> (6 Foot Leads)
<input type="radio"/> <b>A/1K-LTS</b> (1,000Ω Platinum RTD)	<input type="radio"/> <b>1</b> (1 to 5 VDC)	<input type="radio"/> <b>GD</b> (Galvanized Raco Box)	<input type="radio"/> <b>10'</b> (10 Foot Leads)
<input type="radio"/> <b>A/TT100-LTS</b> (Transmitter, 100Ω RTD)	<input type="radio"/> <b>2</b> (2 to 10 VDC)	<input type="radio"/> <b>4X</b> (NEMA 4X)	<input type="radio"/> <b>30'</b> (30 Foot Leads)
<input type="radio"/> <b>A/TT1K-LTS</b> (Transmitter, 1,000Ω RTD)	<input type="radio"/> <b>4</b> (4 to 20 mA)	<input type="radio"/> <b>BB</b> (NEMA 3R)	<input type="radio"/> <b>50'</b> (50 Foot Leads)
<input type="radio"/> <b>A/TTM100-LTS</b> (Matched Transmitter)			
<input type="radio"/> <b>A/TTM1K-LTS</b> (Matched Transmitter)			

**1** Glycol (Bottle, Accessories)

- A/GLYCOL-BOTTLE** (Single Probe)
- A/GLYCOL-BRACKET** (Bracket Only)
- A/GLYCOL-KIT** (Mounting Bracket & Glycol Bottle)
- A/GLYCOL-3PT-BOTTLE** (Single Probe)
- A/GLYCOL-3PT-BRACKET** (Bracket Only)
- A/GLYCOL-3PT-KIT** (Mounting Bracket & Glycol Bottle)

**BUILD PART NUMBER**

After completing (A), (B), (C) & (D) from the above table, fill in the Part Number Table below. (1) is an additional configuration. An example part number is provided.

<b>A</b>	<b>B</b>	<b>C</b>	<b>D</b>

EXAMPLE: A/TT100-LTS - 1 - 4 - 4X - 10'

<b>1</b>
----------

EXAMPLE: A/GLYCOL BOTTLE

